



SEPTIC TANKS  
RETAINING WALLS  
MANHOLES/CATCH BASINS

ORILLIA PRECAST CONCRETE LIMITED

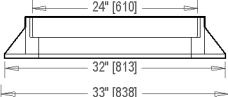
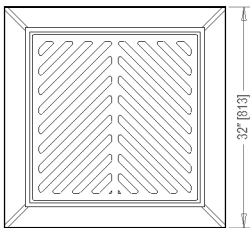
1979 S. Sparrow Lake Rd., Severn Bridge, ON P0E 1N0  
Tel: 705-689-8428 Fax: 705-689-1565  
Email: info@orilliaprecast.com www.orilliaprecast.com

**OPC-CATCH BASIN**

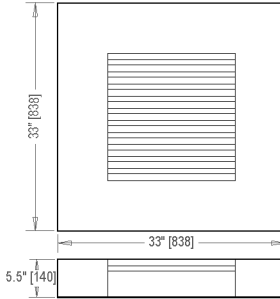
June 20, 2008

## 24" x 24" CATCH BASIN

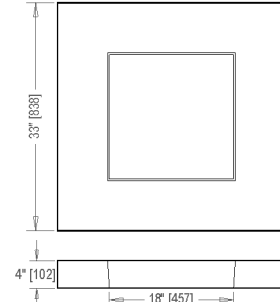
Optional Cast Iron Frame with  
24" (610) Square Bicycle Grate



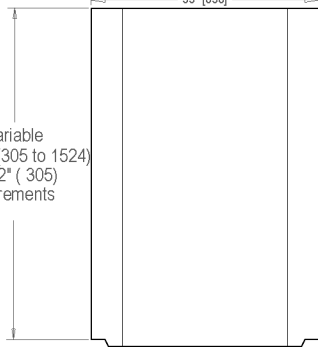
Optional Concrete Flat Top with  
CIP 3/4" Bar Grate



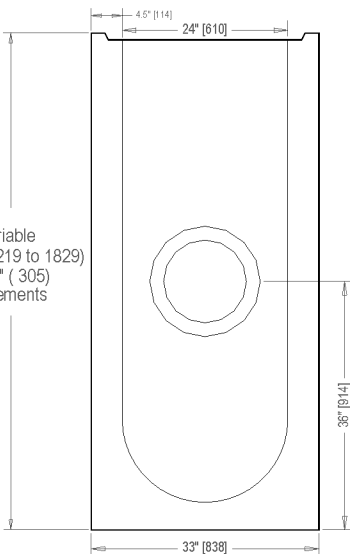
Optional Concrete Flat Top with  
18" (457) Square Opening



Variable  
1' to 5' (305 to 1524)  
in 12" (305)  
increments



Variable  
4' to 6' (1219 to 1829)  
in 12" (305)  
increments



## SPECIFICATIONS:

Manufactured to ASTM-C478.

Concrete strength – Min. 4650 psi ( 32 MPa )

Reinforcing – 4x4 – 6/6 welded wire mesh

Standard wall thickness – 4 1/2" (114mm)

Standard hole sizes - 12" or 16" (305 or 406)

Standard height – 4', 5', or 6' (1219, 1524 or 1829)

Riser section standard heights – 12" (305) to 60" (1524)  
in 12" (305) increments

- Weights: - Riser sections - Approx. 573 lb./ft. (775 kg/m)  
- 36" high catch basin - Approx. 1870 lb. (848 kg)  
- 48" high catch basin - Approx. 2385 lb.(1082 kg)  
- 60" high catch basin - Approx. 2905 lb.(1317 kg)  
- Flat top w/bar grate - Approx. 376 lb. (170 kg)  
- Flat top w/lid – Approx. 365 lb. (166 kg)

## Notes:

Base sections available in 4' to 6' heights, in  
12" increments.

Custom sizes & locations for pipe holes available

Grade rings available in 2" (51) and 3" (76) sizes.

Cast iron frames & covers available. Bicycle type cast iron  
grate standard